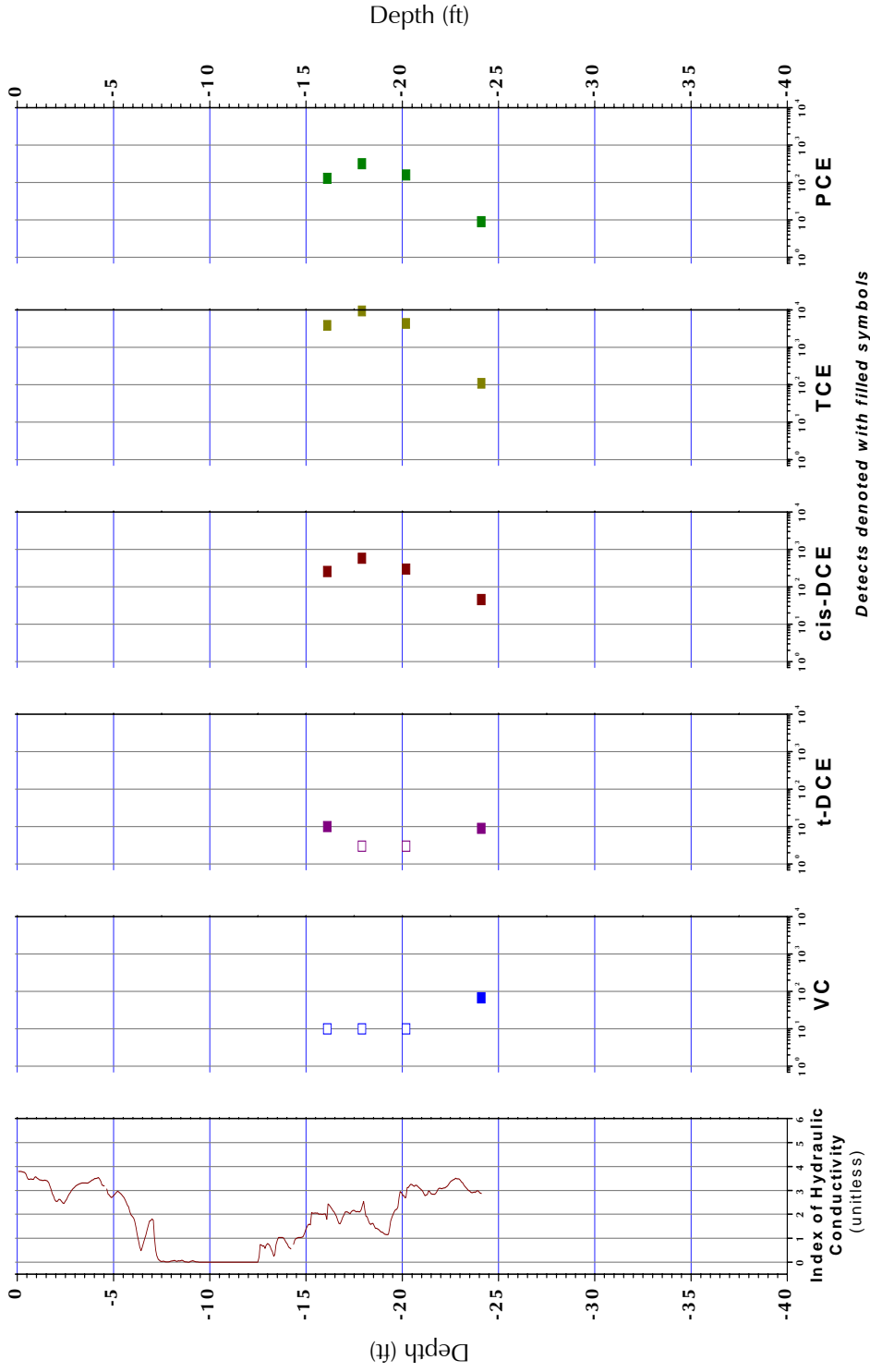


**B-545**



Detects denoted with filled symbols  
 Non-Detects denoted with empty symbols at detection limit

**Profile B-545, I<sub>k</sub> RECORD AND SELECTED VOC ANALYTICAL RESULTS**

Date Sampled: 5/11/2005

ERM, Wayland, Massachusetts

Source: groundwater quality profiling and mobile laboratory data  
 Path: 0:\proj03\1473-R Wayland\Spring2005\Data\VOC\_Chem\_B545.opj  
 Date: 05-18-05 amm

